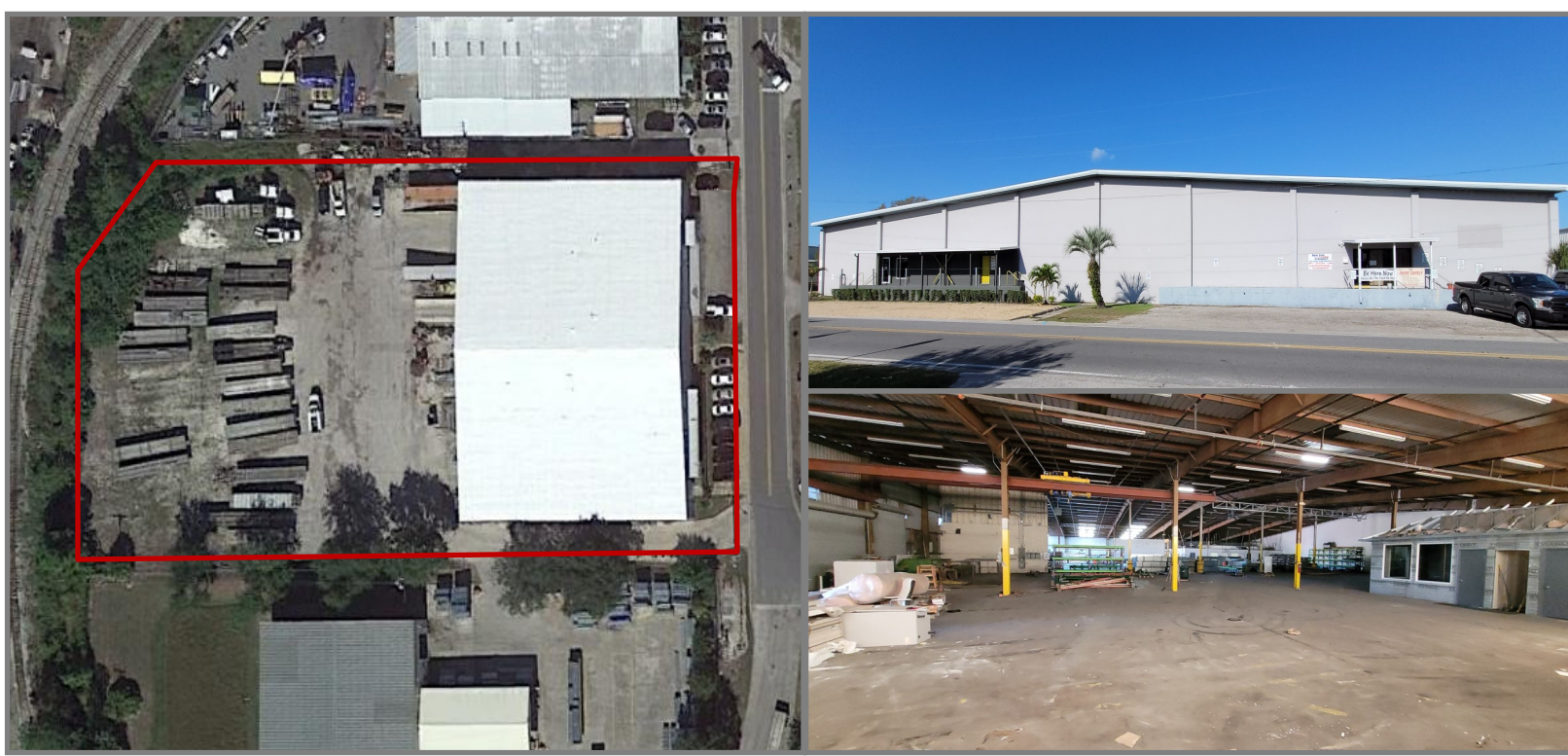


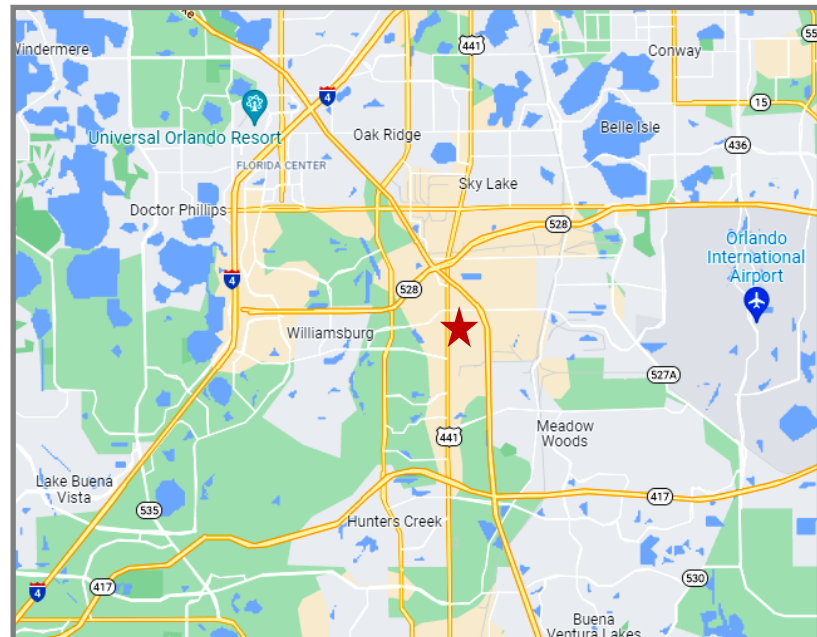
**For Lease \$12.00 NNN**



11222 Astronaut Blvd. Orlando, FL 32837

**Property Details:**

- ◆ 31,000 SF Dock High Warehouse
- ◆ 2.38 Acres for Outdoor Storage/Parking
- ◆ Dock Doors: (2)10'x12', (1)10'x18', (1)8'x10'
- ◆ Ramps: (1) 12'x12 and (1) 16'x12'
- ◆ Clear Height 16'-22'
- ◆ 3 Phase Power/1,200 amp
- ◆ Sprinklered
- ◆ 2021 Taxes \$19,000
- ◆ Orange County Zoning Ind-4
- ◆ Florida's Turnpike, SR 528, SR 417, Orange Blossom Tr., John Young Parkway, and Orange Ave all within 3 miles



**CORY KROEGER**  
Mobile: 407.402.8581  
[cory@kroegercommercial.com](mailto:cory@kroegercommercial.com)

**CHRIS BRUSSOW**  
Mobile: 407.929.3161  
[chris@kroegercommercial.com](mailto:chris@kroegercommercial.com)

**KROEGER & CO.**  
750 Jackson Ave #104 Winter Park, FL 32789  
Phone: 407.696.3088 · [WWW.Kroegercommercial.com](http://WWW.Kroegercommercial.com)